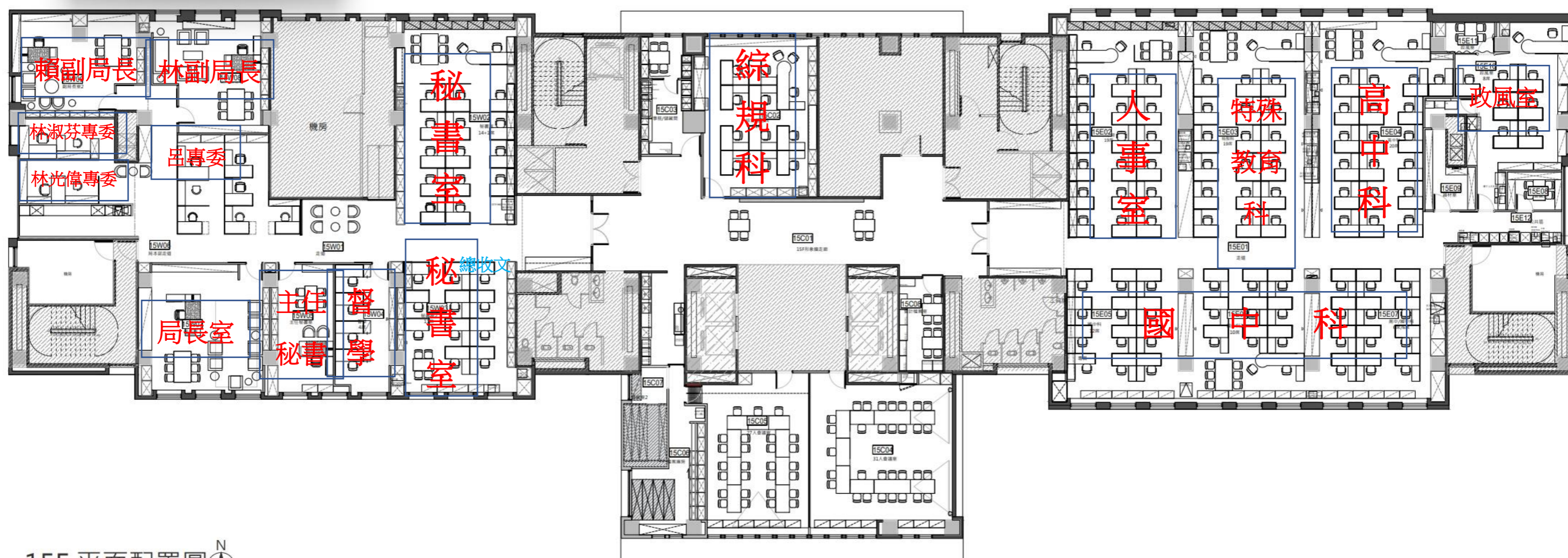
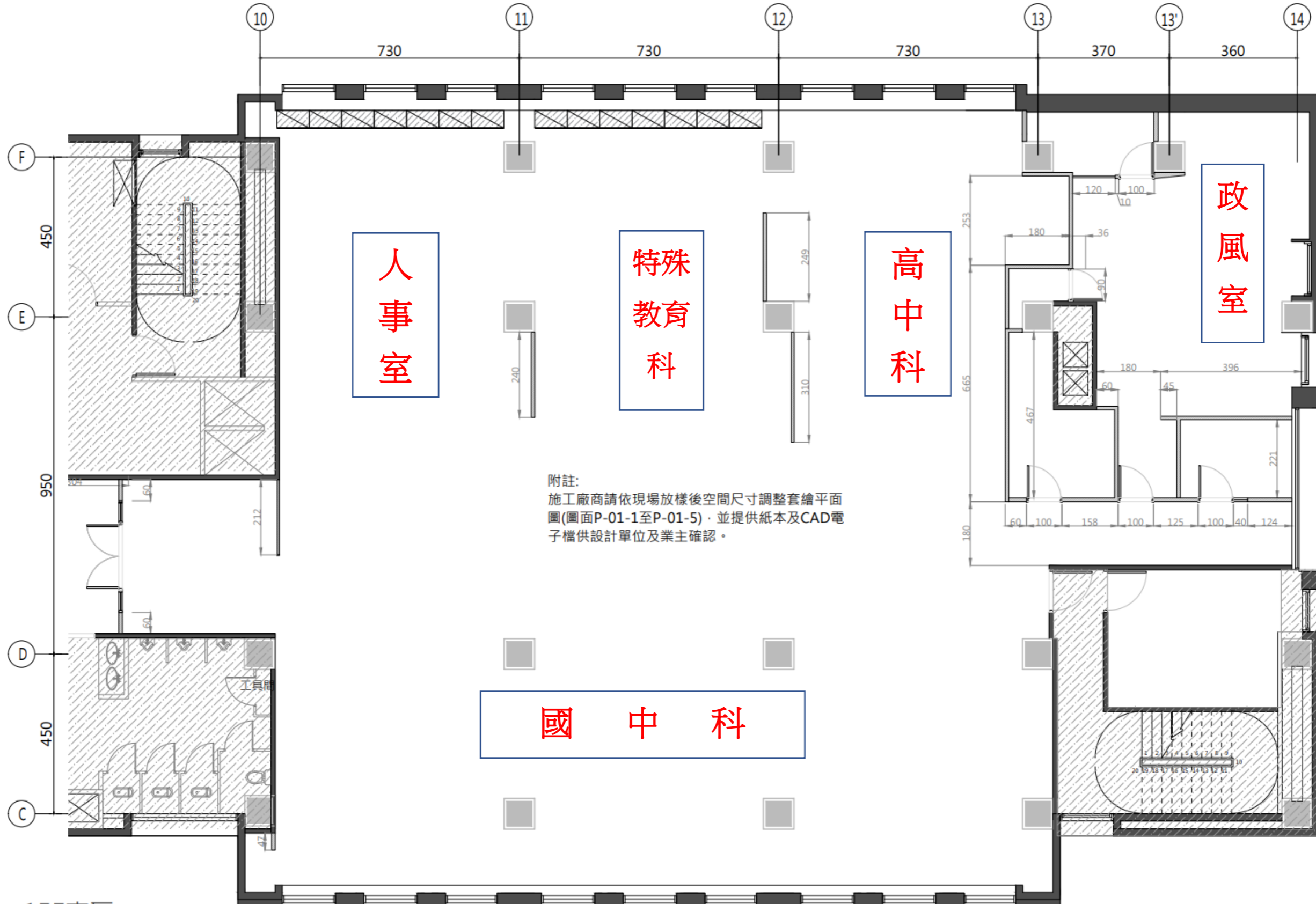


「桃園市政府教育局辦公空間及會議室裝修工程」15樓配置圖



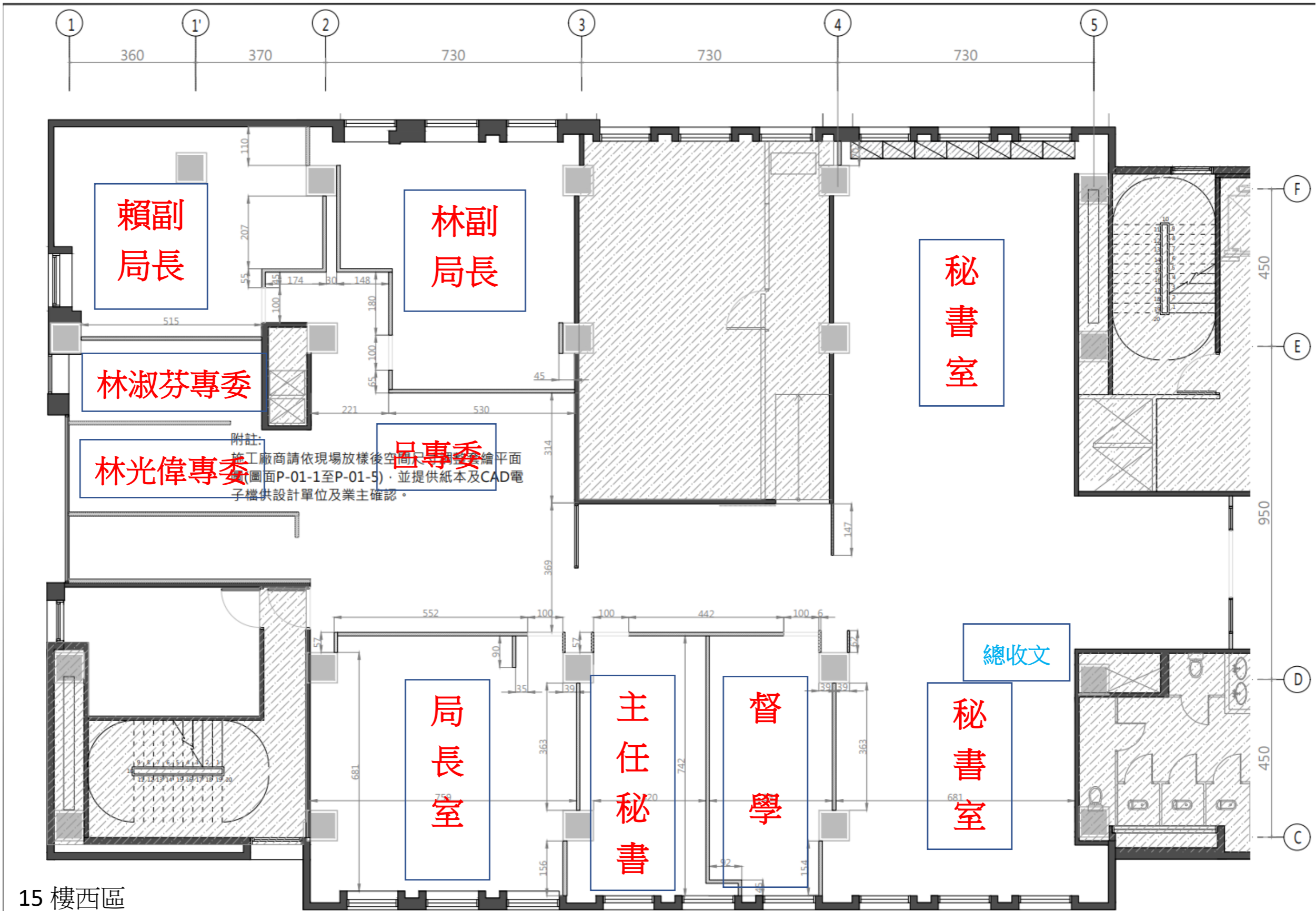
15F 平面配置圖 



附註:
 施工廠商請依現場放樣後空間尺寸調整套繪平面圖(圖面P-01-1至P-01-5)·並提供紙本及CAD電子檔供設計單位及業主確認·

15F東區

N
 輕隔間6骨料至樓板
 輕隔間9.2骨料至樓板
 玻璃分間牆, 金屬口字型收邊框嵌10MM清玻, 高度2400MM

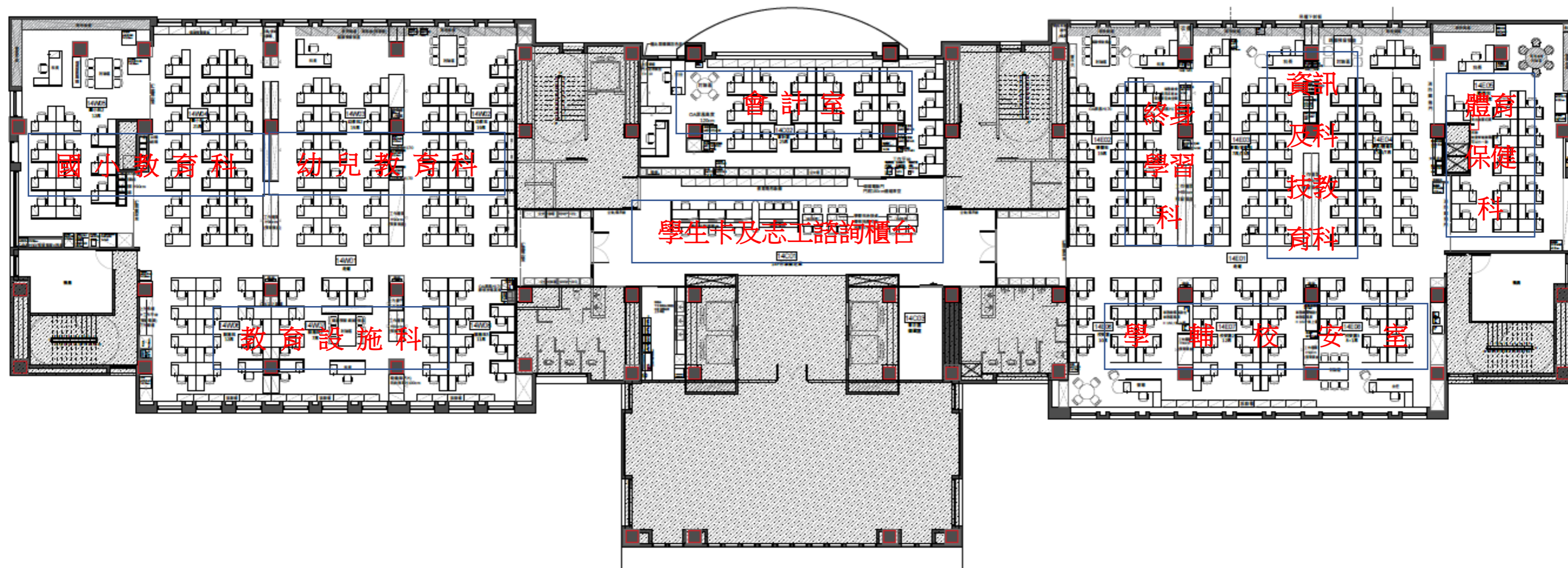



15 樓西區

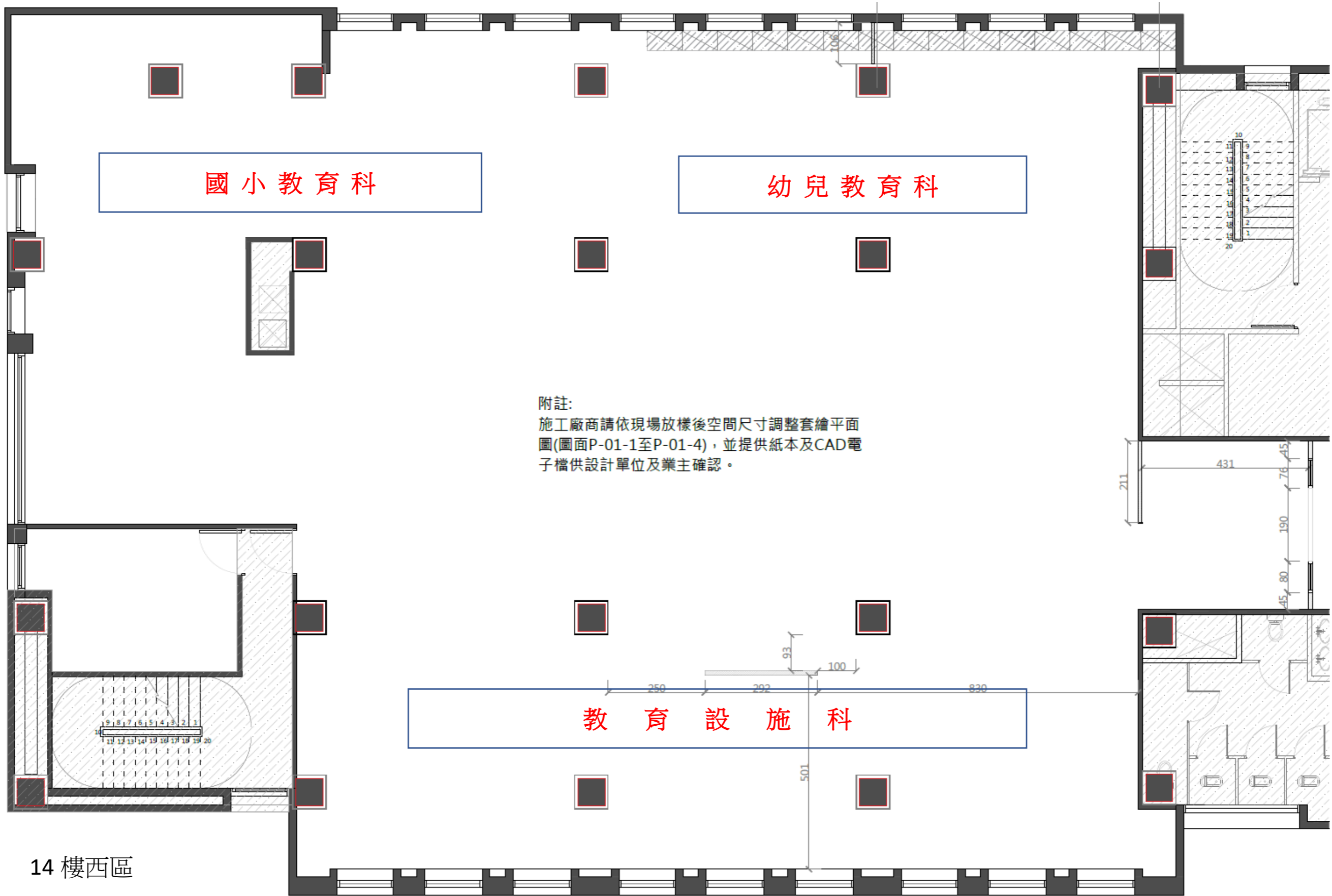


15 樓中區

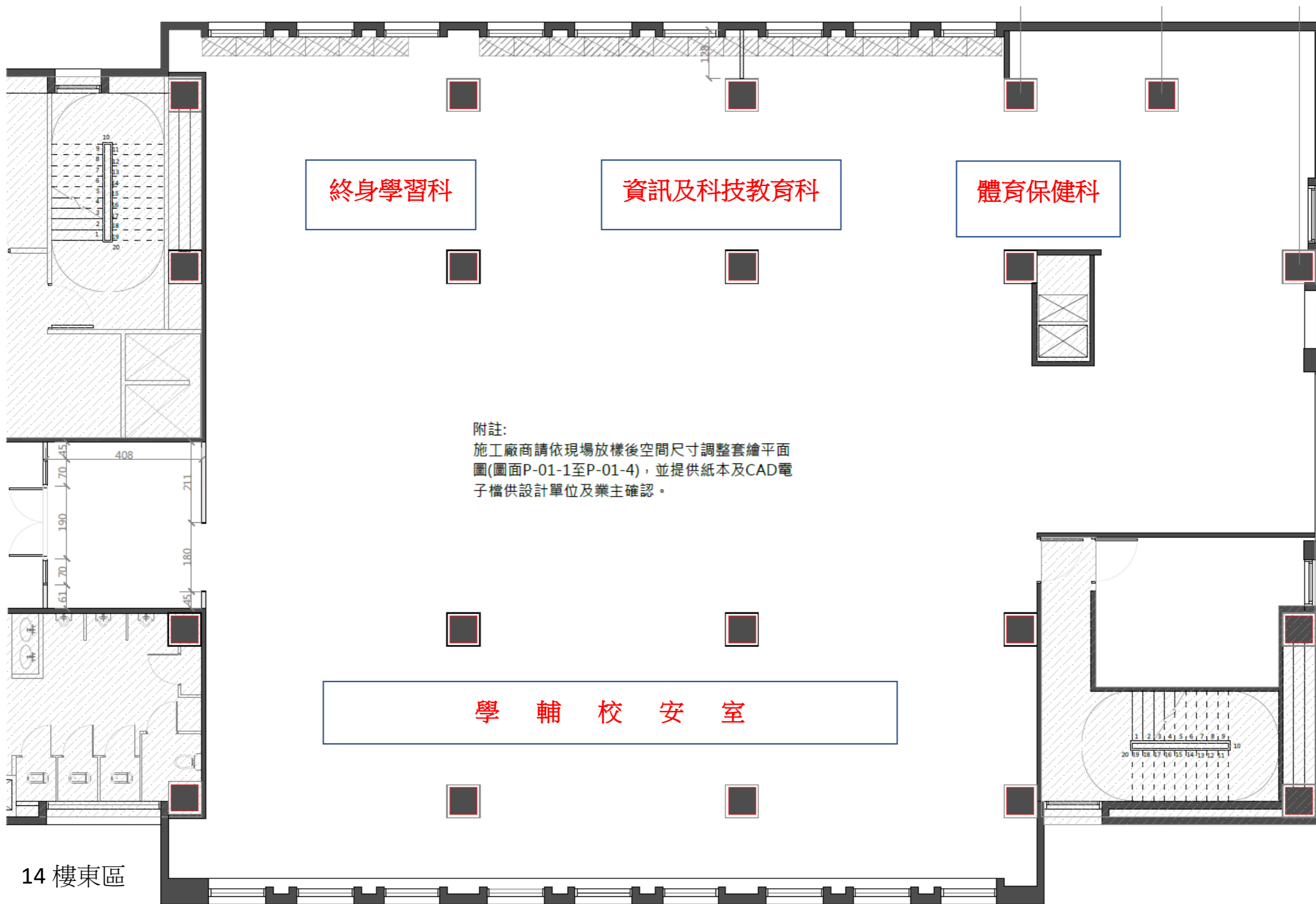
「桃園市政府教育局辦公空間及會議室裝修工程」14樓配置圖

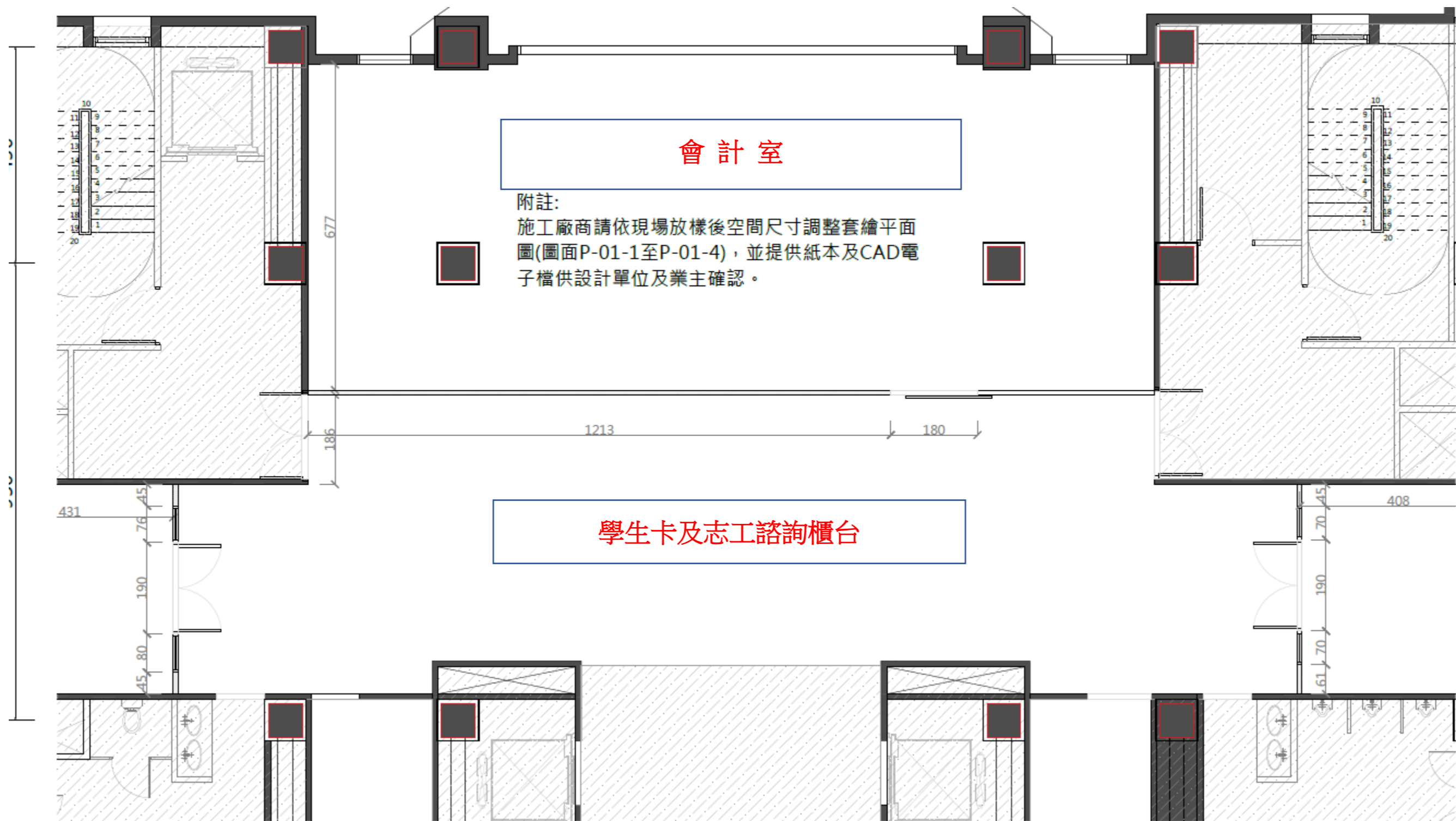


14F 平面配置圖 



14 樓西區





14 樓中區